

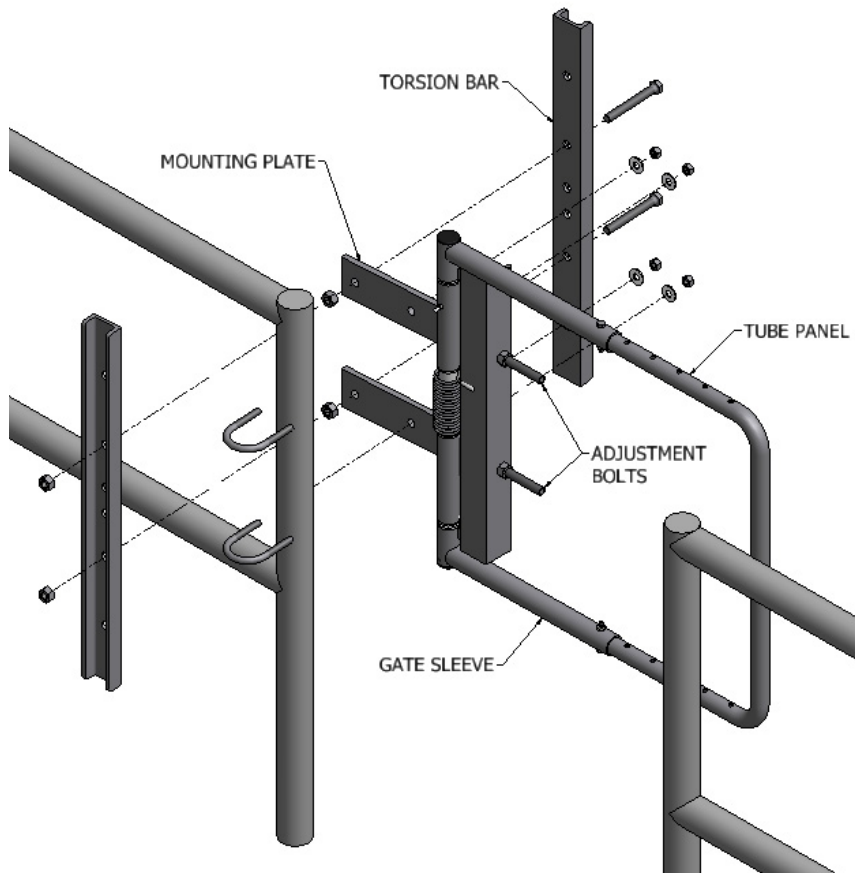
INSTALLATION OF THE ADJUSTABLE SELF-CLOSING SAFETY GATE

WARNING:

INSTALLATION OF THE SELF-CLOSING SAFETY GATE CAN BE INHERENTLY DANGEROUS. PLEASE TAKE ALL PRECAUTIONS NECESSARY DURING THE MOUNTING PROCESS. READ ALL INSTRUCTIONS THOROUGHLY BEFORE INSTALLING.

Step 1 – Preparation – (See Drawing A & Tables 2 & 3)

- a) Unpack and sort all components.



<u>Components:</u>	<u>Qty:</u>
Gate (with adjustment bolts)	1
Torsion Bar	2
Hardware Package	1

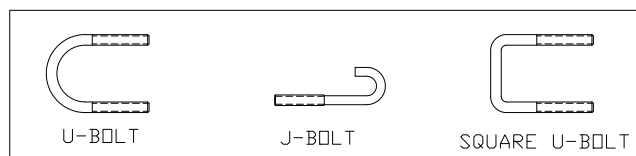
<u>Hardware Package:</u>	<u>Qty:</u>
U-bolt	2
Square U-Bolt	2
J-Bolt	2
3/8 Flatwasher	4
3/8-16 Locknut	4
1/2-13 x 3 1/2 HHCS	2
1/2-13 Hex Nut	2

Drawing A: Gate Assembly

Step 2 Guard Rail Mounting – (See Drawings B, C & D)

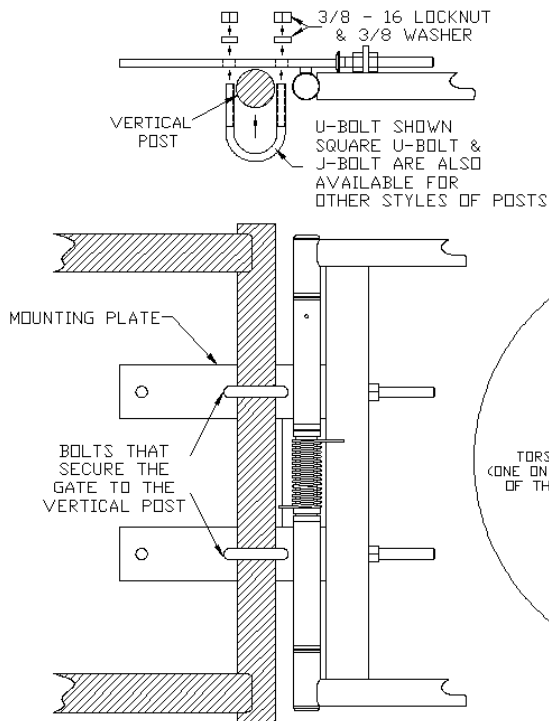
- a) Select mounting bolts to attach mounting plate to guardrail vertical post.
Use U-bolts for round post, J-bolts for angle post, and square U-bolt, for square post.

Drawing B: Post Mounting Bolts

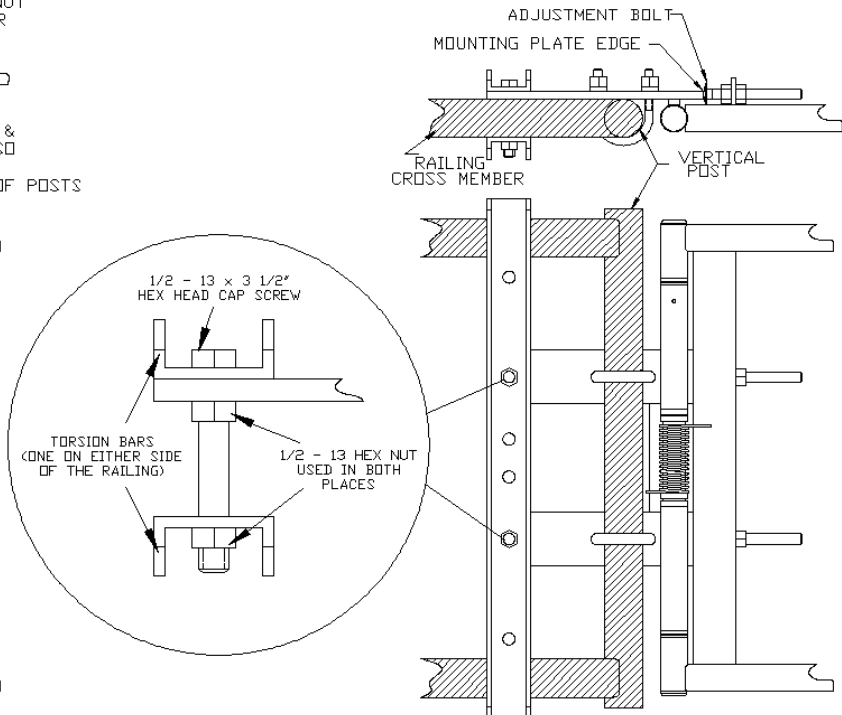


- b) Mount gate with top gate sleeve tube in line with top of existing guardrail (See Drawing C).
- c) Mounting plate **MUST** be placed on opposite side of guardrail post from U-bolts.
- d) Fasten gate by placing U-bolt around guardrail vertical post, with threaded ends through mounting plate holes (See Drawing C).
- e) Make sure it will open fully in desired direction.

NOTE: DO NOT FULLY TIGHTEN MOUNTING BOLTS UNTIL INSTRUCTED TO DO SO.



Drawing C

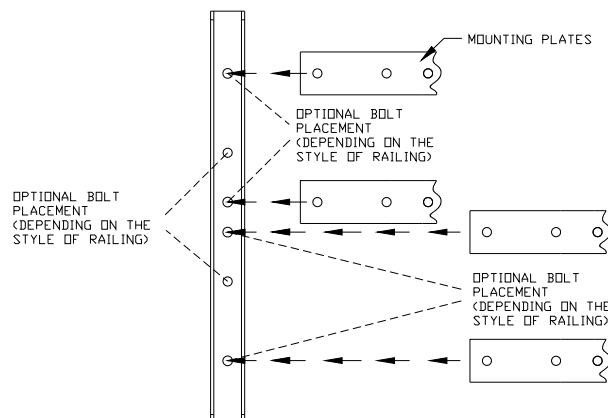


Drawing D

Step 3 – Torsion Bar Attachment

- a) Torsion bars are required when mounting gate to guardrail system.
- b) Torsion bars are designed with a choice of 3 different mounting positions for mounting flexibility. **(See Drawing E)**
- c) Install torsion bars securely on both sides of guardrail with 1/2 - 13 x 3 1/2" hex head screws and (2) hex nuts. **(See Drawing D)**

Drawing E:



Step 4 – Tighten Mounting Bolts

- a) Tighten all mounting bolts and nuts.
- b) Test gate to make sure it opens fully in desired direction and automatically closes completely.
- c) If U-bolt ends interfere with normal operation of gate, trim bolt ends to approximately 1/4" from locknut with hacksaw or cut-off wheel.

Step 5 – Adjusting Gate Position - (See Drawing A)

- a) Hold gate in desired closed position.
- b) Loosen the nuts on the adjustment bolts and position adjustment bolts (Drawing A) until heads are snug against mounting plate edge (Drawing D, Top View).
- c) Re-tighten hex nuts on adjustment bolts. Open gate and let close. Make sure gate stops at desired closed position.

WARNING:

A fall resulting in SERIOUS INJURY or DEATH may occur if gate is propped open! DO NOT set adjustment bolts and gate for open position. DO NOT prop gate open, especially on elevated surface.

Step 6 – Gate Width Adjustment

- a) Gate width is adjustable in 2 inch increments.
- b) Remove hex head cap screws and locknuts from gate sleeve and tube panel.
- c) Gate width MUST be set to within 2 inches from structure opposite of gate mount.
- d) Slide gate tube panel in or out to set position.
- e) Align holes in gate tube panel and gate sleeve.
- f) Replace cap screws through aligned holes.
- g) Replace lock nuts and tighten.
- h) **DO NOT** use gate unless gate tube panel is in place and cap screws are securely tightened.

Table 1 – Inspection Schedule			
INSPECT FOR:	EACH USE:	WEEKLY:	ACTION:
Any visible signs of damage	✓	✓	If damaged or deformed, IMMEDIATELY discontinue use, MARK or TAG as un-safe, and REPLACE gate.
Loose Fasteners	✓	✓	TIGHTEN fasteners IMMEDIATELY.
Gate Swing to original closed position on its own	✓	✓	If gate does not swing freely or return to its original closed position on its own: Check for dirt or debris. Clean and lubricate if needed. If gate still does not return properly, IMMEDIATELY discontinue use, MARK or TAG as unsafe, and REPLACE gate.
Spring: Damage, wear, dirt, debris		✓	Clean if dirt or debris present. If damaged or deformed, IMMEDIATELY discontinue use, MARK or TAG as unsafe, and REPLACE gate.
Pivot: Damage, wear, dirt, debris		✓	If damaged or deformed, IMMEDIATELY discontinue use, MARK or TAG as unsafe, and REPLACE gate. Clean and lubricate if needed.

Table 2: Gate Parts List (use with Drawing A)		
ITEM	DESCRIPTION	QTY
1	Torsion Bar	2
2	Cap Plug 1 1/4"	2
3	3/16 x 1 1/2 Cotter Pin	1
4	Torsion Spring Stainless Steel	1
5	Round Cap	1
6	Safety Gate Pivot Bushing	8
7	Gate Pivot Tube 3/4" OD Stainless Steel	1
8	Adjustment Bolts: 1/2-13 x 4 1/2 Carriage Bolt	2
9	1/2-13 Hex Nut	8
10	3/8-16 x 2 x 3 1/4 U-Bolt	2
11	3/8-16 x 2 x 3 1/4 Square U-Bolt	2
12	3/8-16 J-Bolt	2
13	3/8 Flat Washer 1" OD	4
14	3/8-16 Nylon Insert Hex Locknut	4
15	1/2-13 x 3 1/2 Hex Head Cap Screw Full Thread	2
16	1/4-20 x 1 3/4 Hex Head Cap Screw	2
17	1/4-20 Nylon Insert Hex Locknut	2

WARRANTY

All Cotterman Company products are guaranteed against defects in workmanship and materials for a period of one (1) year after shipment.

Questions or inquiries should be directed to:

COTTERMAN® COMPANY

P.O. BOX 168

CROSWELL, MICHIGAN 48422

PHONE: (810) 679-4400 FAX: (810) 679-4510

E-MAIL: info@cotterman.com