



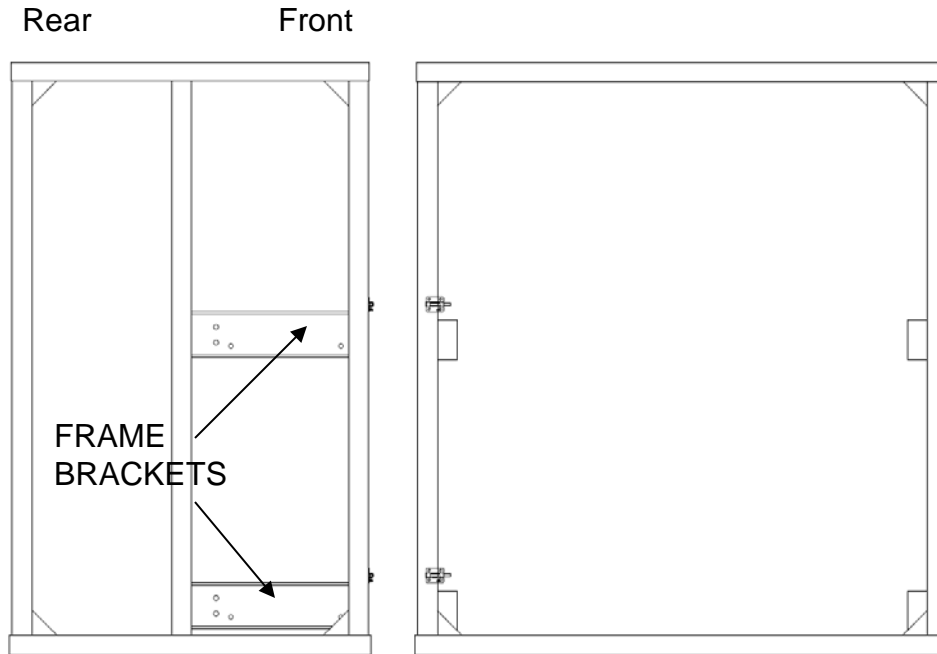
ASSEMBLY INSTRUCTIONS

Little Giant Heavy-Duty Rolling Shelf

MAJOR COMPONENTS

You will have more than one SHELF and SUB-SHELF depending on the model.

There will only be (1) FRAME.



FRAME



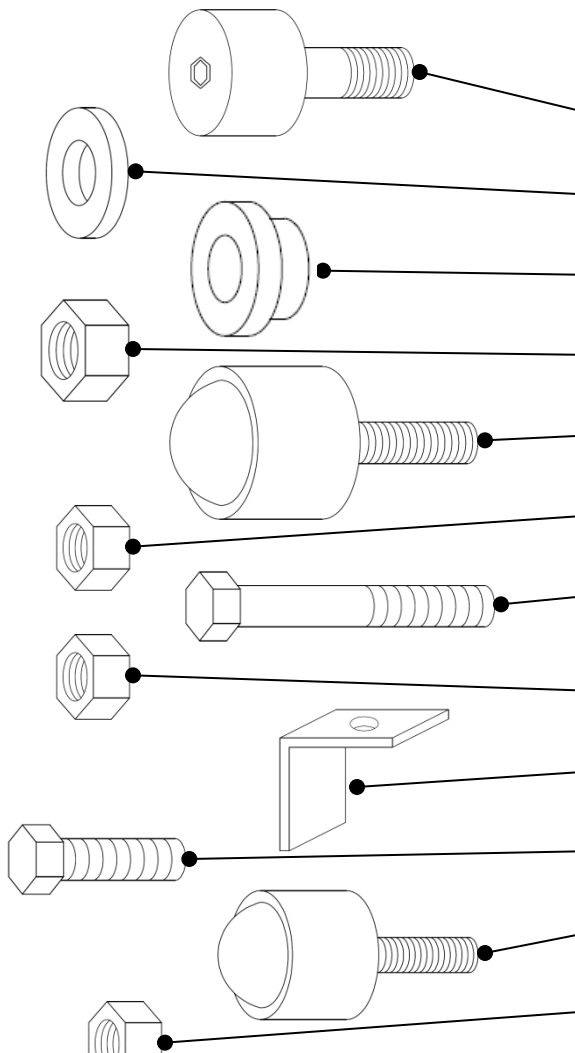
SHELF



SUB-SHELF

HARDWARE KIT

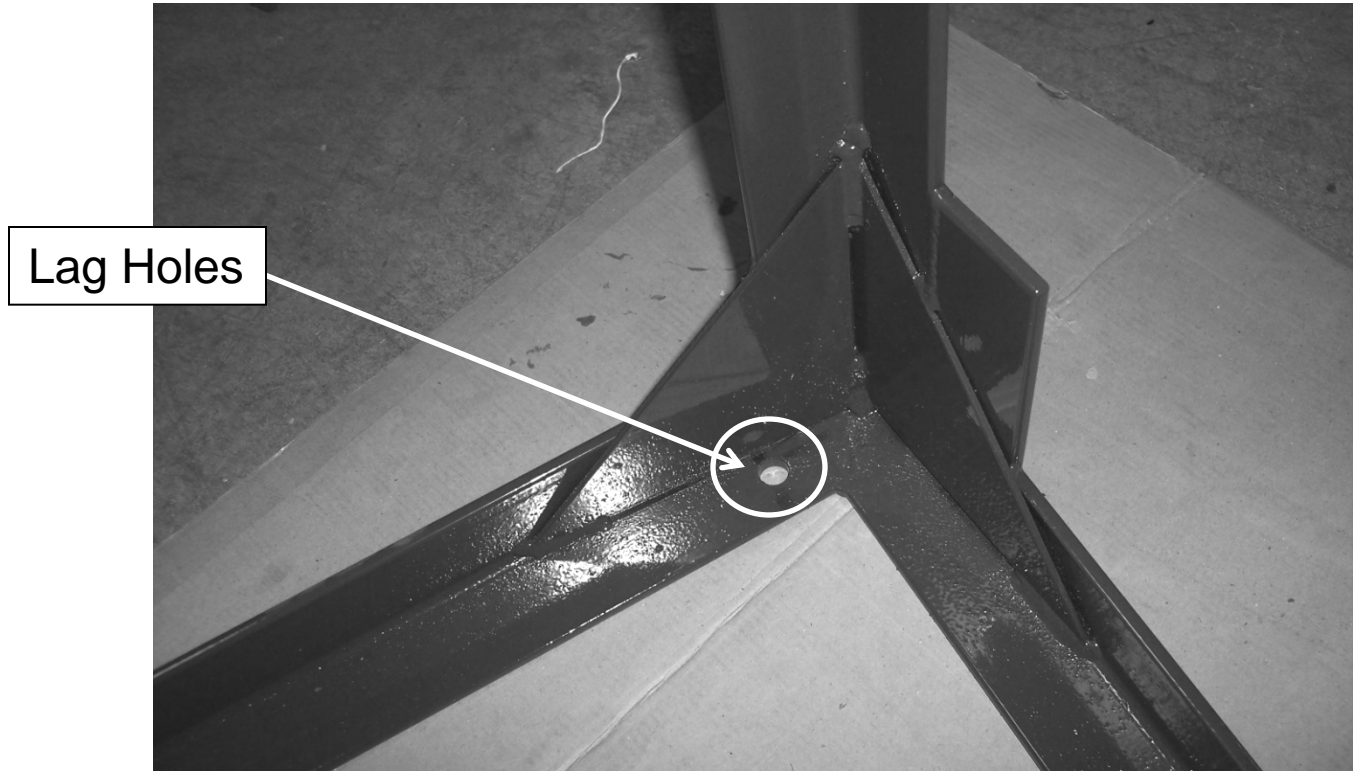
Check that your hardware kit includes all of the following pieces:



	ITEM	Specifications	No. of Shelves	
			2	3
A	TRACK ROLLER		32	48
B	WASHER	1" OD x 0.090" approx thick	32	48
C	SPACER	1" OD x 7/16" thick	32	48
D	NUT (TRACK ROLLER)	1/2-20 hex w/nylon insert	32	48
E	LARGE BALL TRANSFER		8	12
F	NUT (LARGE BALL TRANSFER)	3/8-16 hex w/nylon insert	8	12
G	CARRIAGE BOLT - LONG	3/8-24 x 2-1/2"	8	12
H	NUT (CARRIAGE BOLT)	3/8" hex w/nylon insert	12	18
J	POSITIVE-STOP ANGLE		4	6
K	CARRIAGE BOLT - SHORT	3/8-24 x 1-1/4"	4	6
L	SMALL BALL TRANSFER		8	12
M	NUT (SMALL BALL TRANSFER)	5/16-18 hex w/nylon insert	8	12

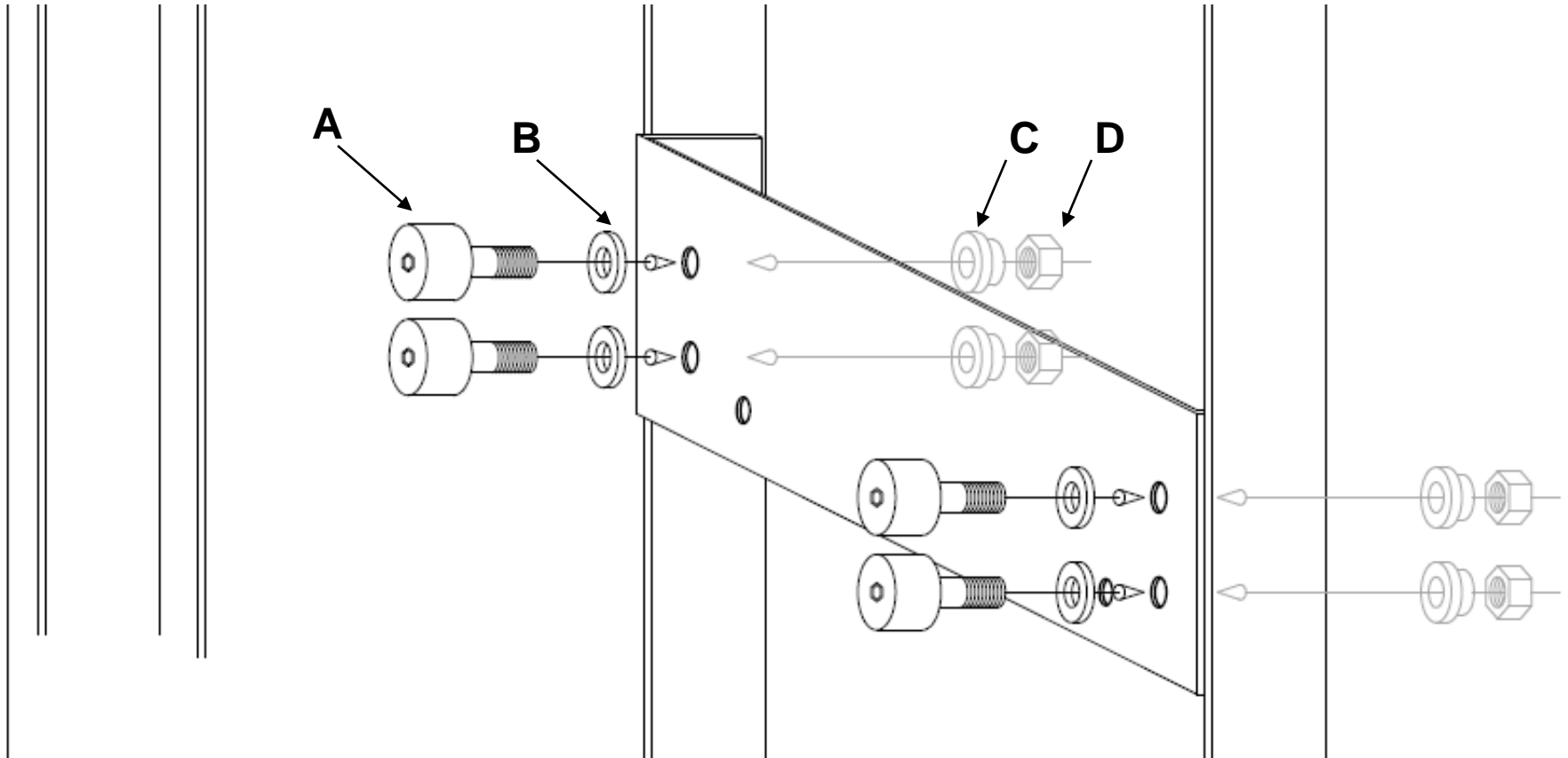
STEP 1

Before beginning the assembly of the unit, please make sure the **FRAME** is securely bolted to the floor using the (4) Lag Holes provided in the corners of the base of the **FRAME**.



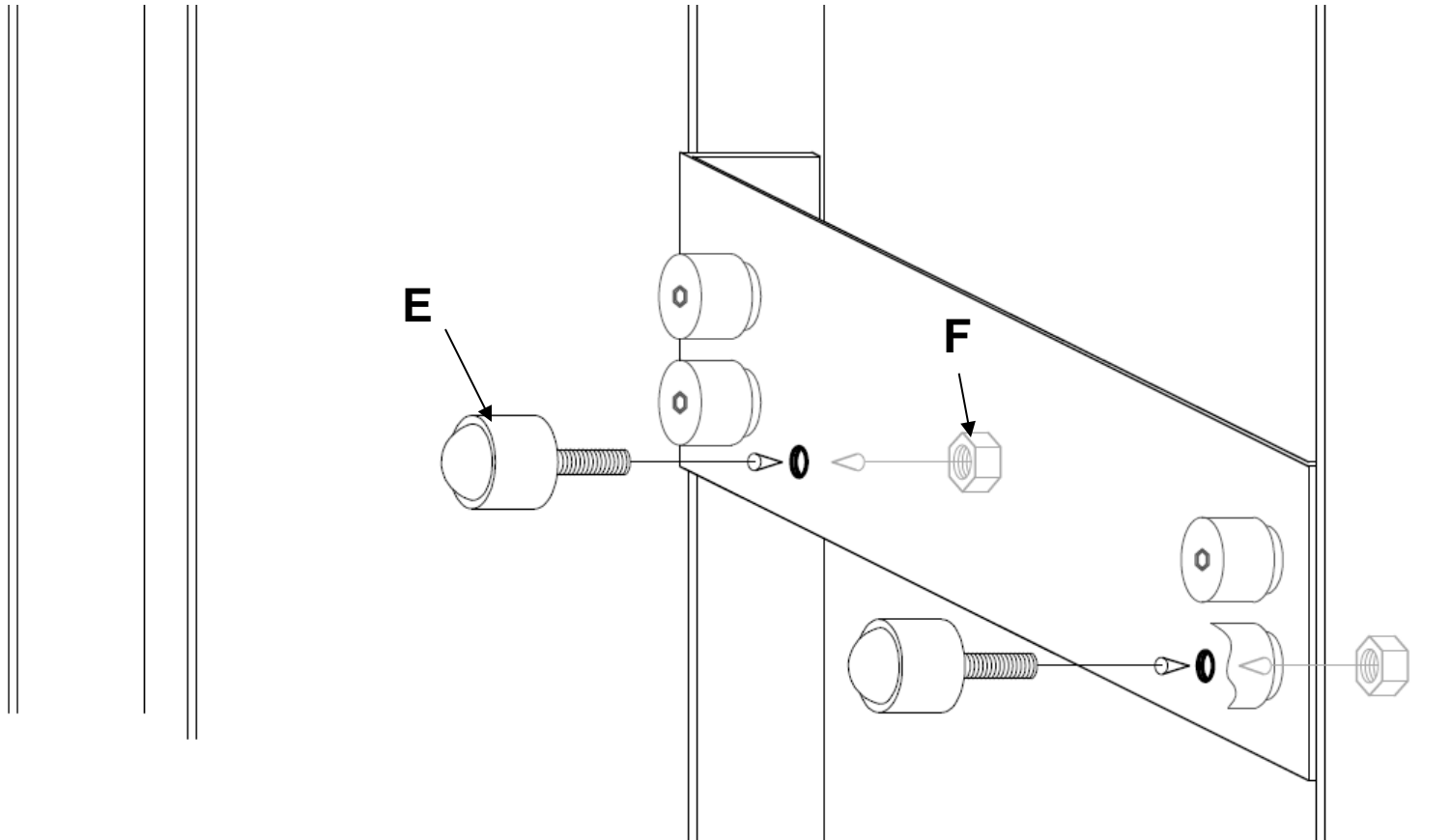
STEP 2

In the **FRAME** Brackets, Assemble **ROLLER (A)** through **WASHER (B)**, and fasten it using **SPACER (C)** and **NUT (D)**. Repeat this for each Roller position; 4 per side per shelf.



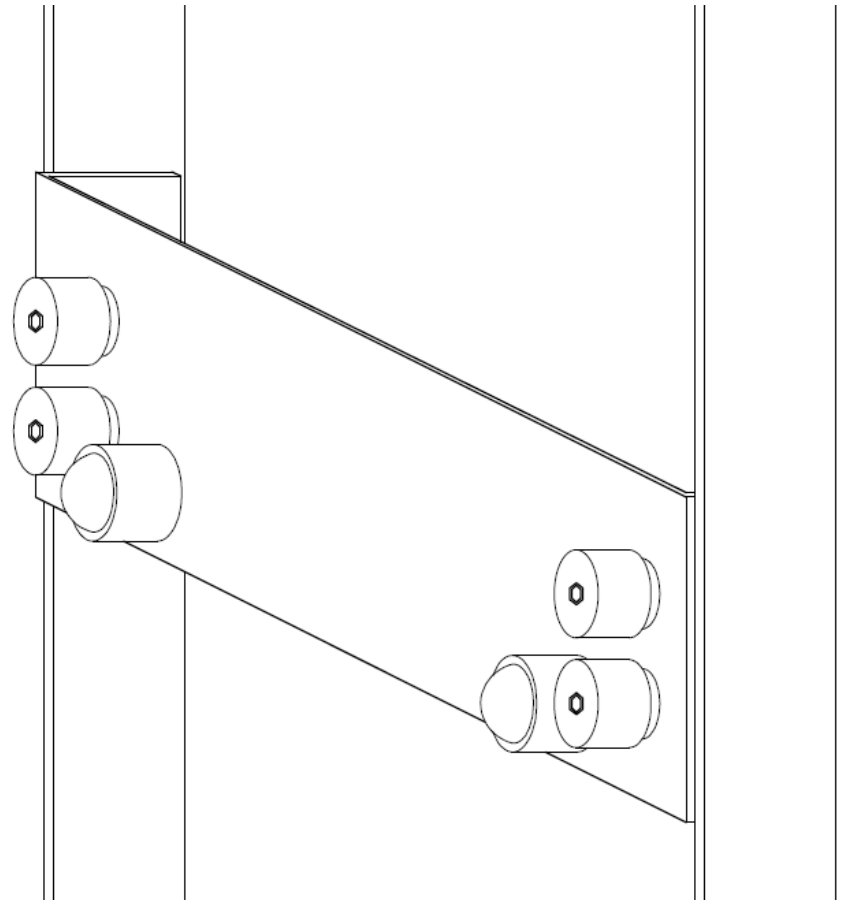
STEP 3

Assemble **LARGE BALL TRANSFER (E)** and fasten it using **NUT (F)**. Repeat this for each Ball-transfer position; 2 per side per shelf.



STEP 4

Once assembled, each frame bracket should look like this:



STEP 5

Slide the **SUB-SHELF** into the **FRAME**. The **SUB-SHELF** rail should roll between the upper and lower rows of Rollers (Figure A).

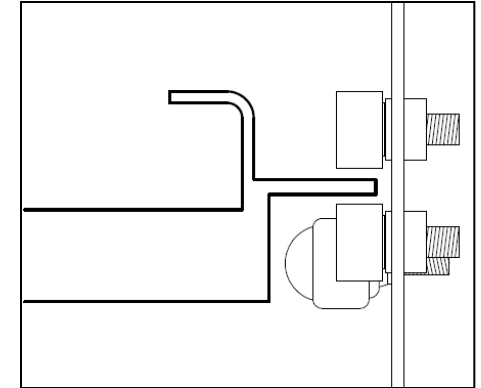
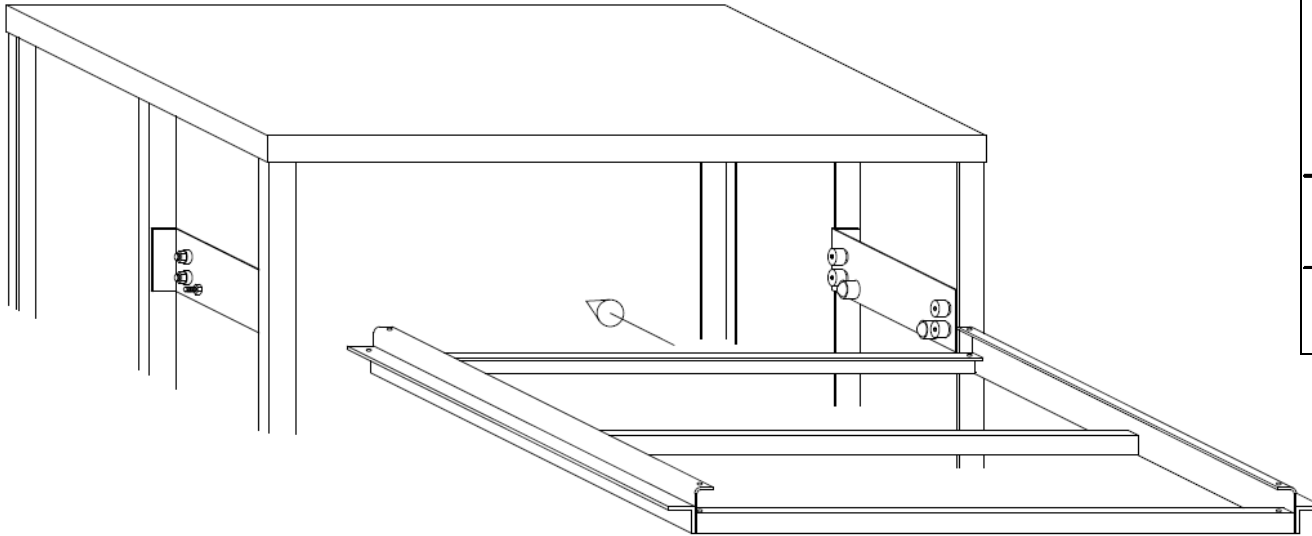
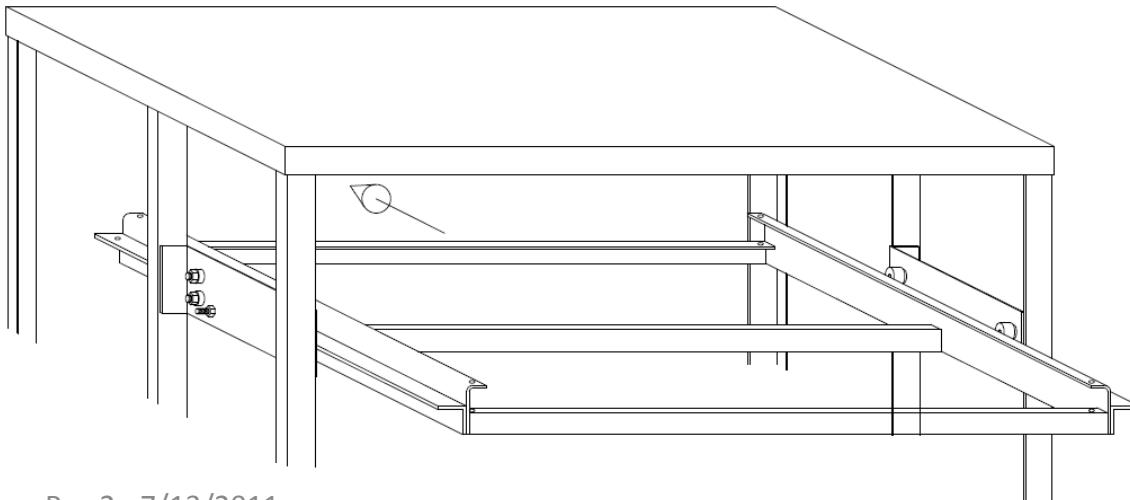
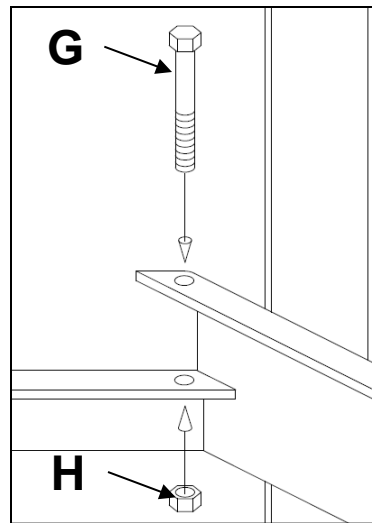
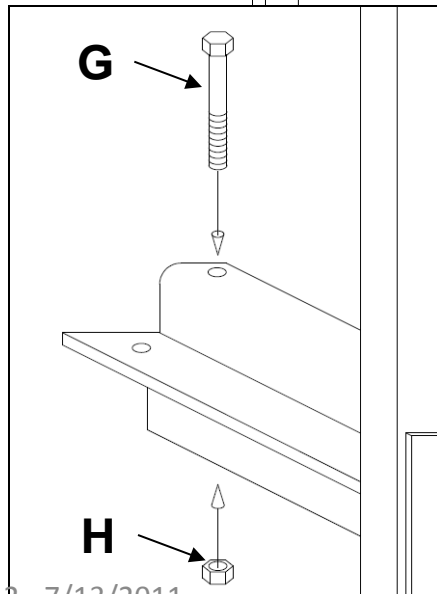
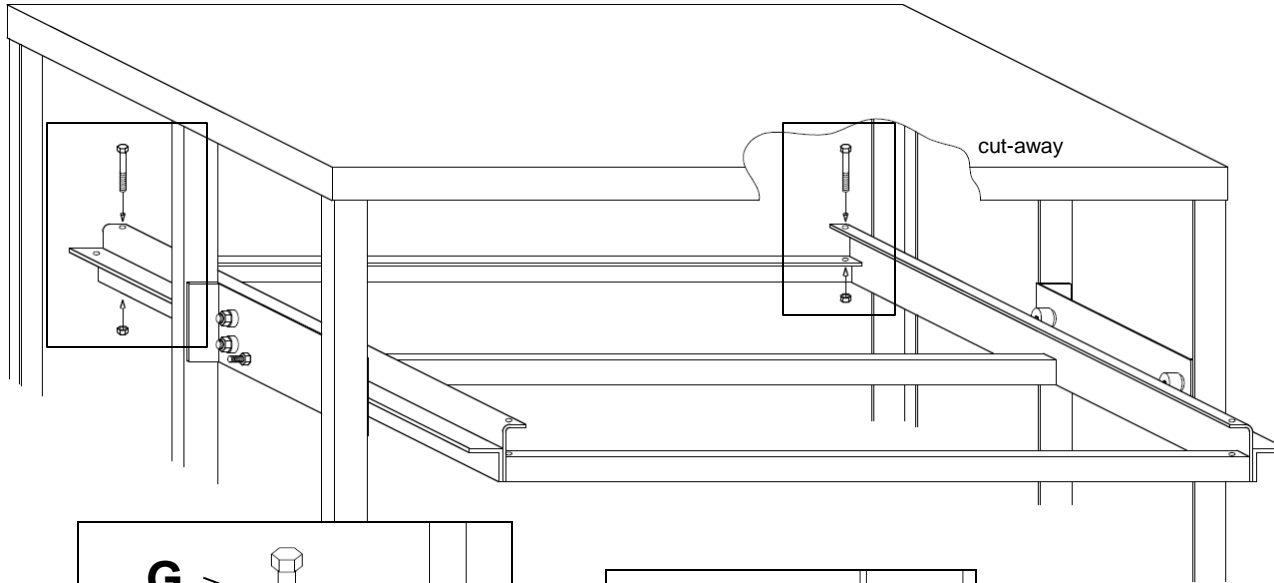


Figure A
(Shows right side only)

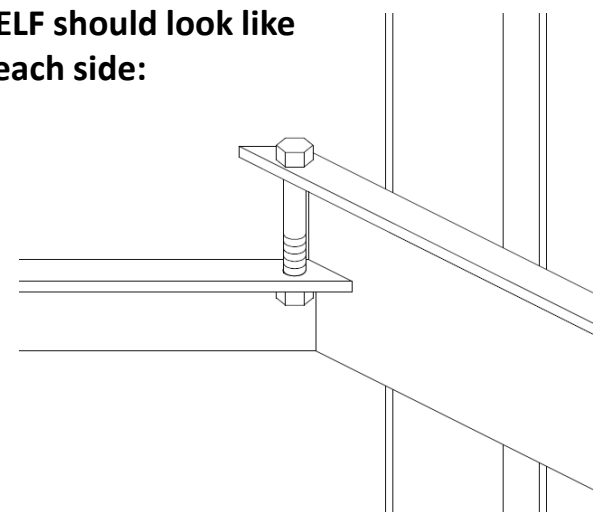


STEP 6

Assemble **CARRIAGE BOLT (G)** through the two holes in the rear of the **SUB-SHELF**, and fasten with **NUT (H)**. Repeat on each side of each **SUB-SHELF**.

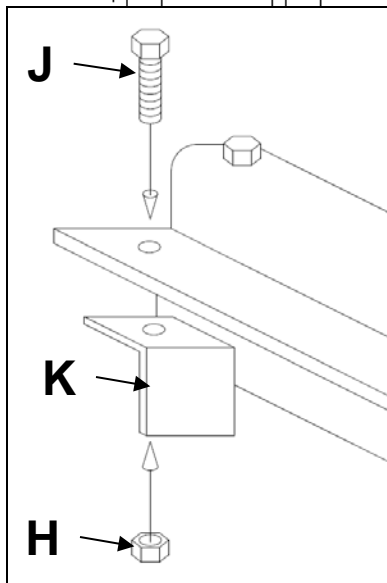
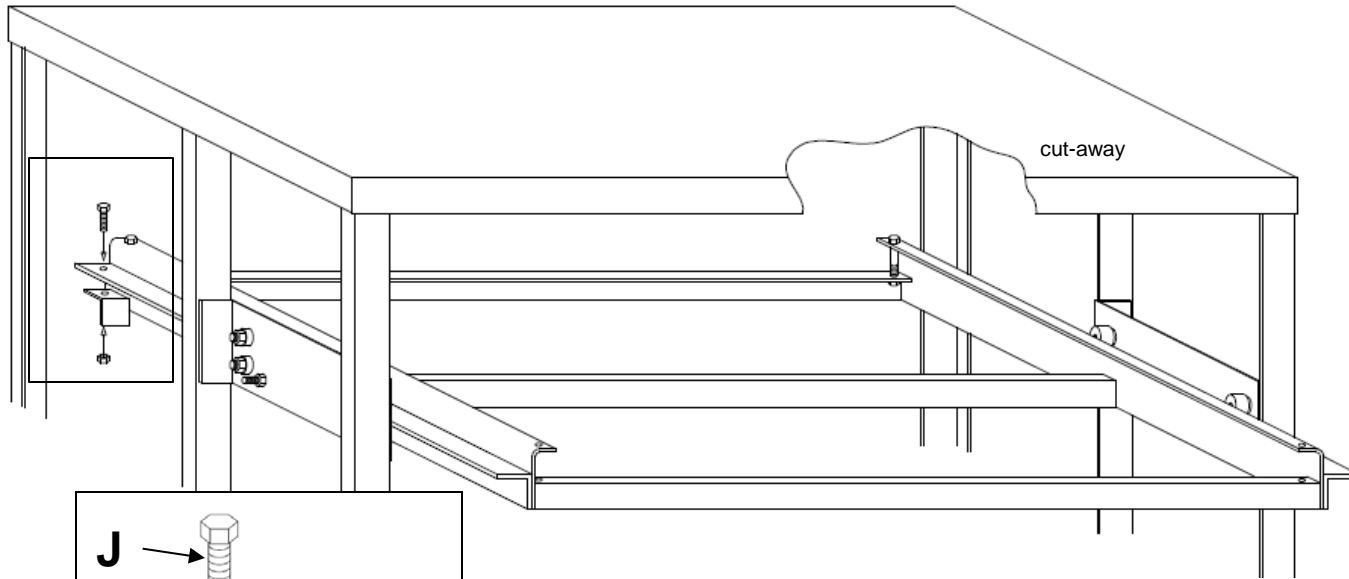


SUB-SHELF should look like this on each side:

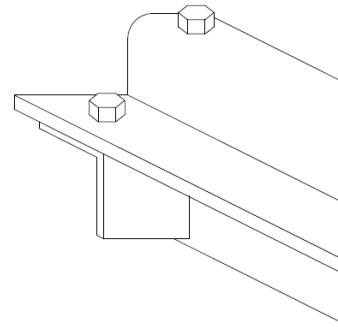


STEP 7

Assemble **POSITIVE STOP (J)** to the rear of the **SUB-SHELF** using **BOLT (K)**, and fasten it with **NUT (H)**. Repeat on each side of each **SUB-SHELF**.

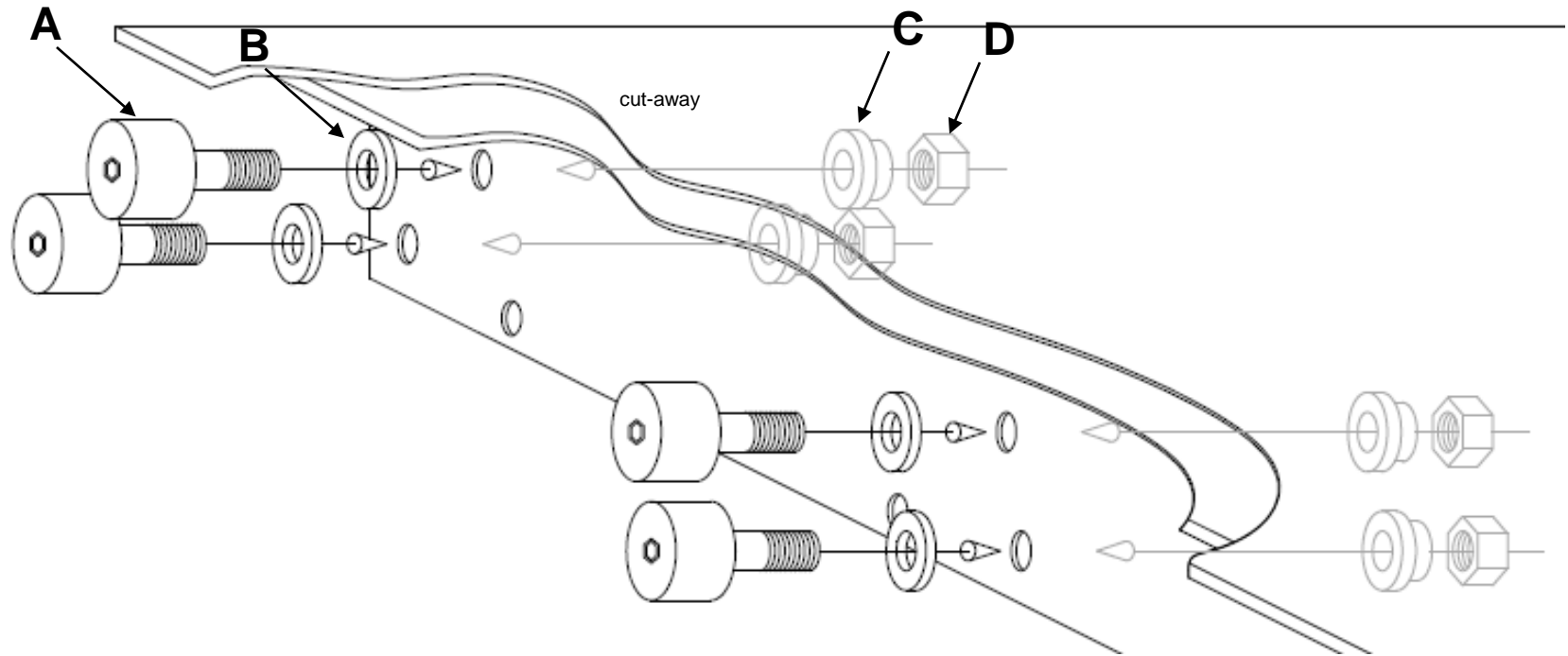


SUB-SHELF should look like this on each side:



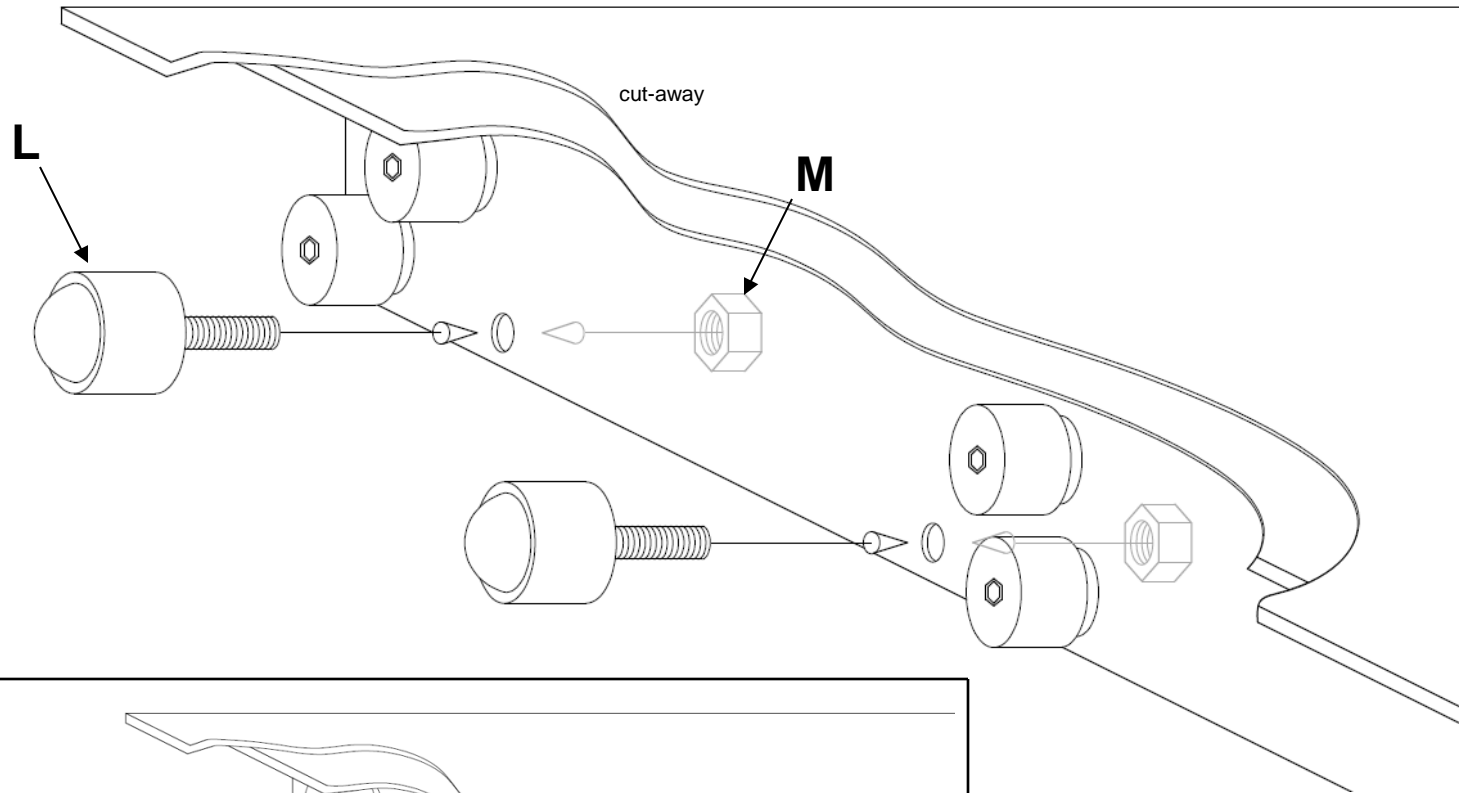
STEP 8

Assemble **ROLLER (A)** to the rear of the **SHELF** through **WASHER (B)**, and fasten it using **SPACER (C)** and **NUT (D)**. Repeat on each side of each shelf.

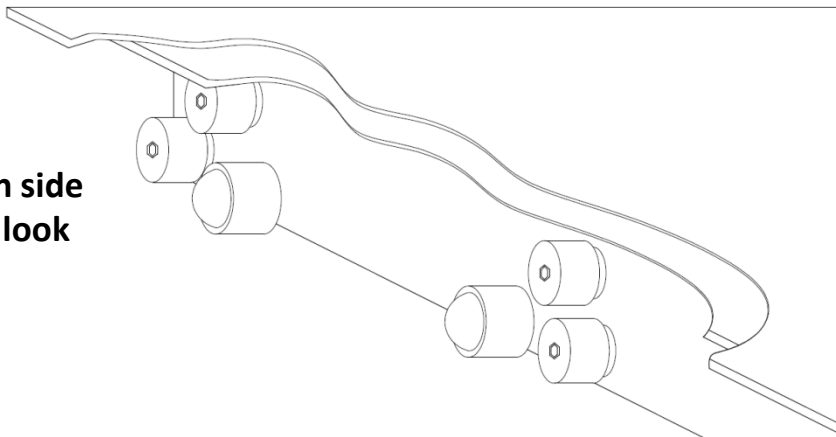


STEP 9

Assemble **SMALL BALL TRANSFER (L)** and fasten it using **NUT (M)**. Repeat this for each Ball Transfer position; 2 per side per shelf.



Once assembled, each side of each SHELF should look like this:



STEP 10

Slide the **SHELF** into the **SUB-SHELF**. The inside **SUB-SHELF** rail should roll between the upper and lower rows of Rollers on the **SHELF** (Figure B).

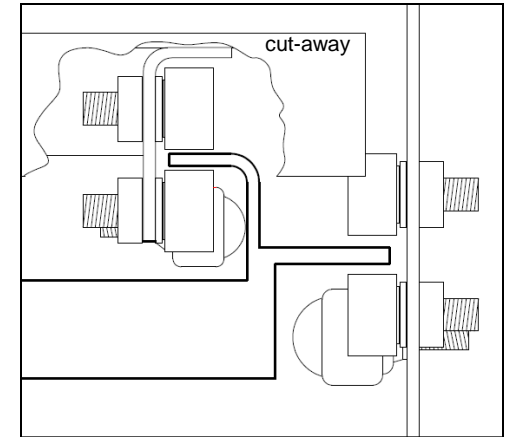
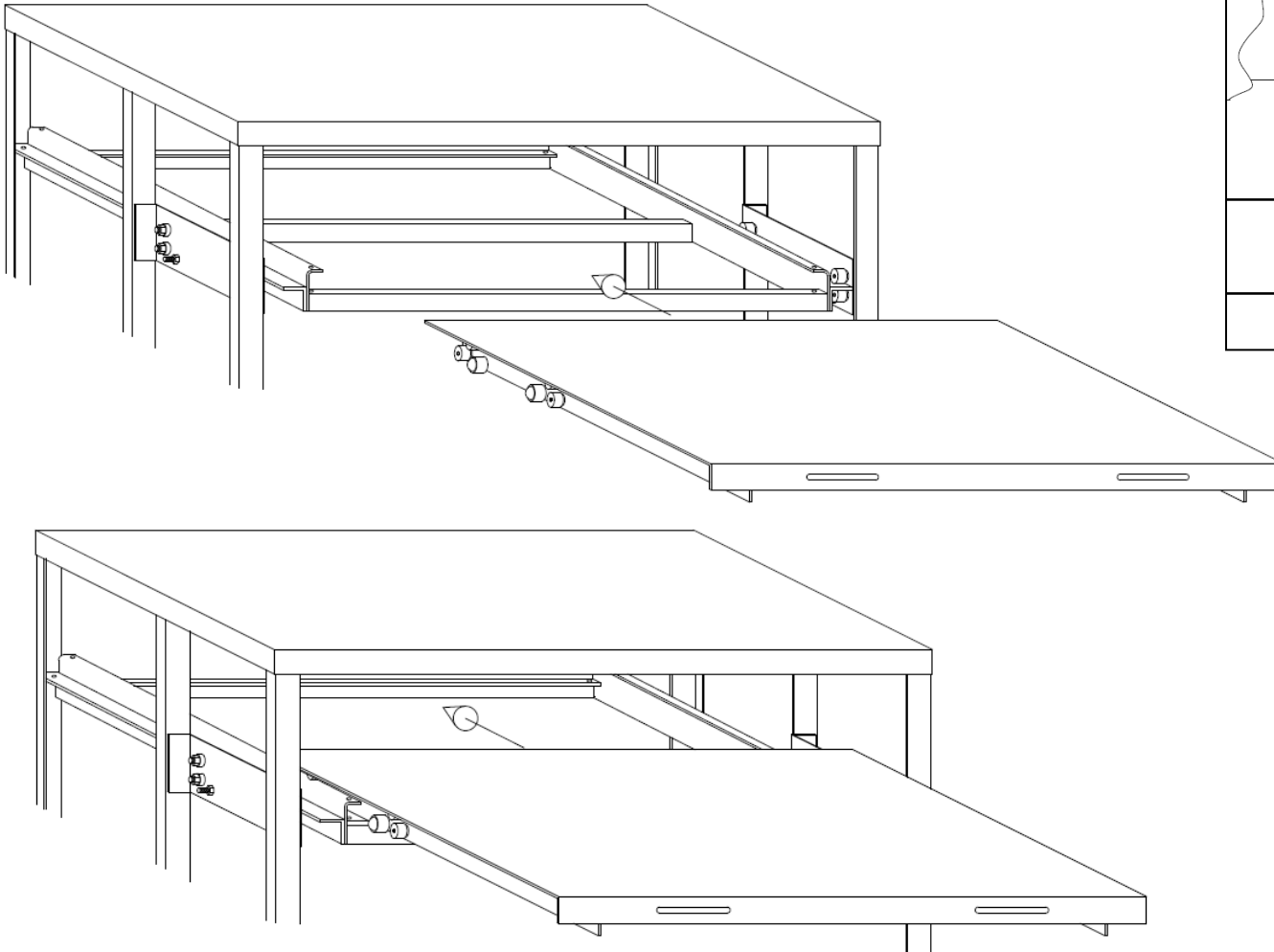
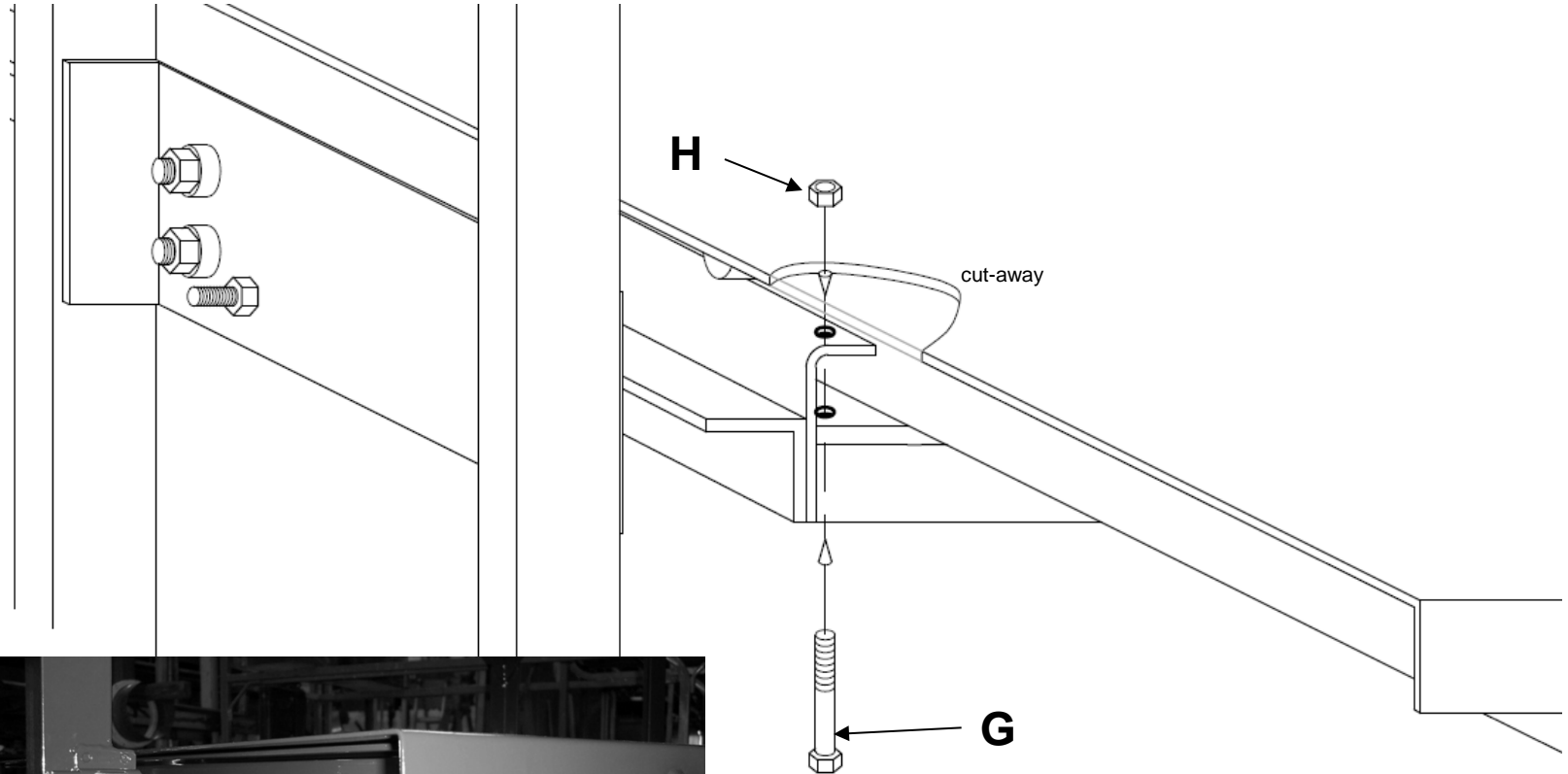


Figure B
(Shows right side only)

STEP 11

With the shelf open slightly for access, Assemble **CARRIAGE BOLT (G)** through the holes in the front of the **SUB-SHELF**. Fasten it using **NUT (H)**.



IMPORTANT SAFETY PRECAUTIONS:

- Shelf must be anchored to the floor
- Shelf must be mounted on a level floor (within 1/16")
- Extend only one shelf at a time
- Use care when lowering items onto shelves; “set” not “drop”
- Pull-out / Push-in shelves slowly
- Loads must be evenly distributed on each shelf
- Do not stand on shelves / Do not use shelves as a work-surface
- Keep hands and fingers away from roller pinch points.

The **LOAD CAPACITY** of each shelf is **1000 lbs MAX.**
DO NOT EXCEED this load.